



HOWLING MOON INSTALLATION GUIDE

www.howlingmoon.com.au

sales@howlingmoon.com.au

Included parts:

Bag of Pegs
Mounting Bolts

Required tools:

Spanner size No.10
Spanner Size No.13
Tape Measure
Drill (if required)



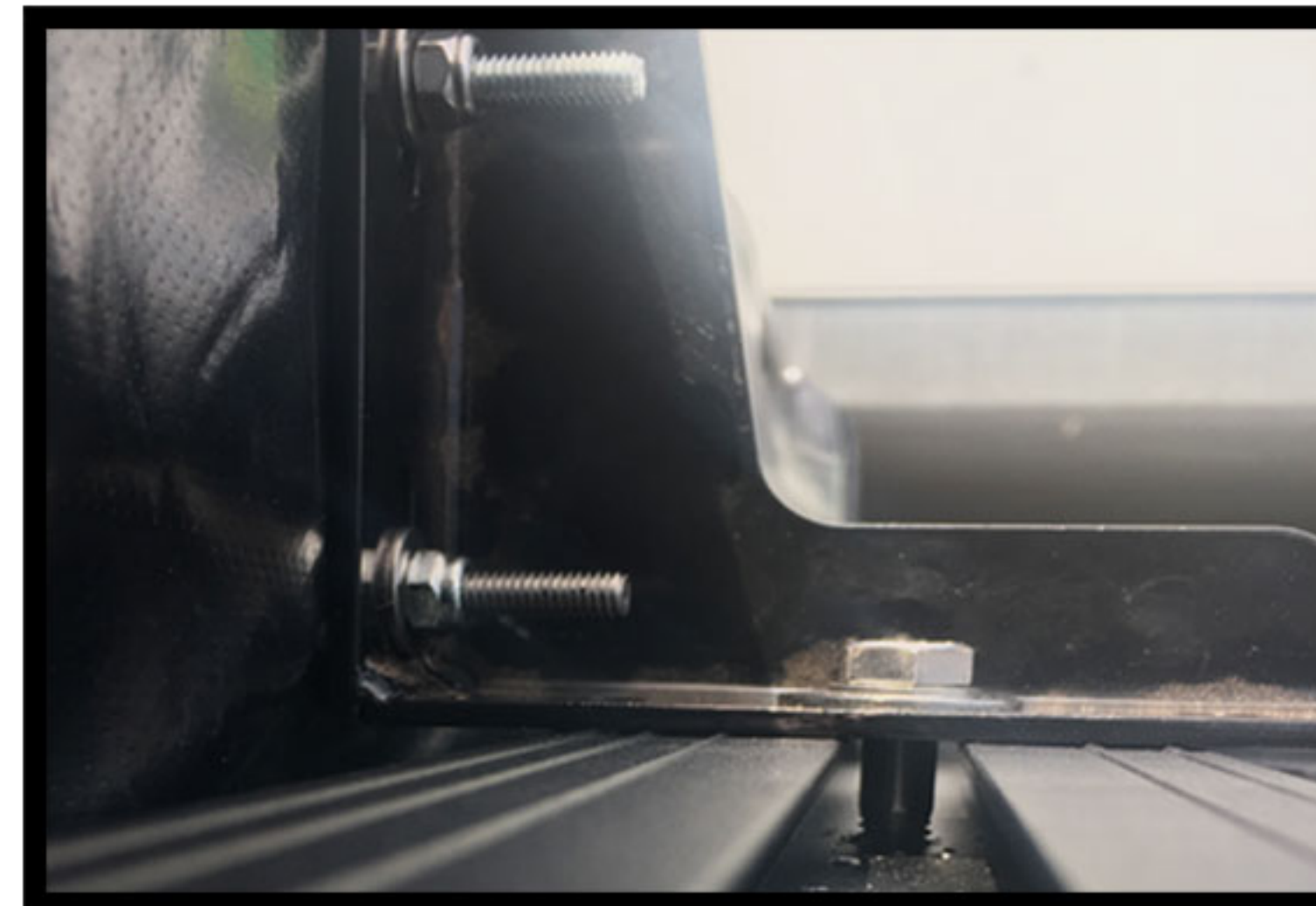
OPTIONAL EXTRAS: Mounting Brackets



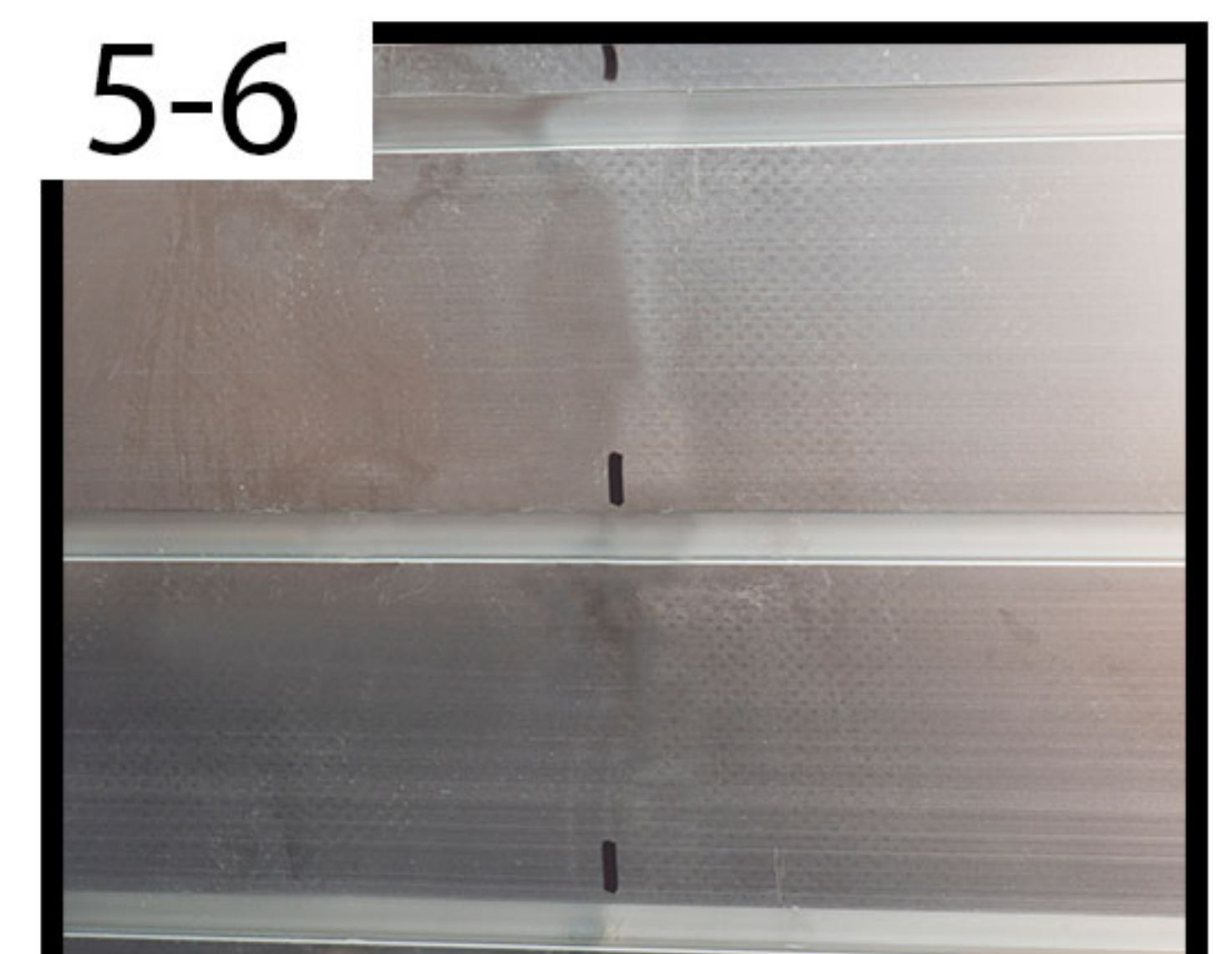
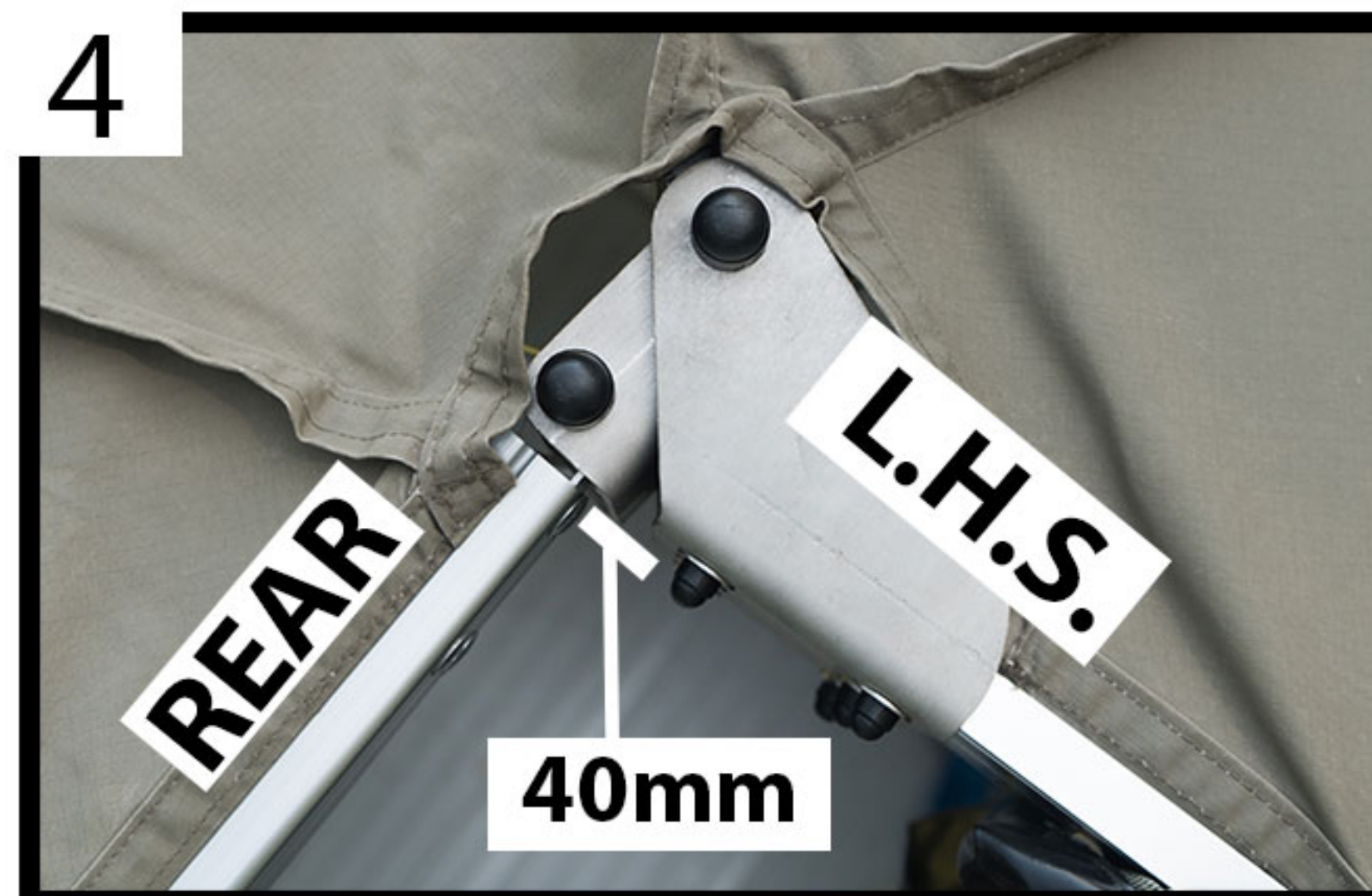
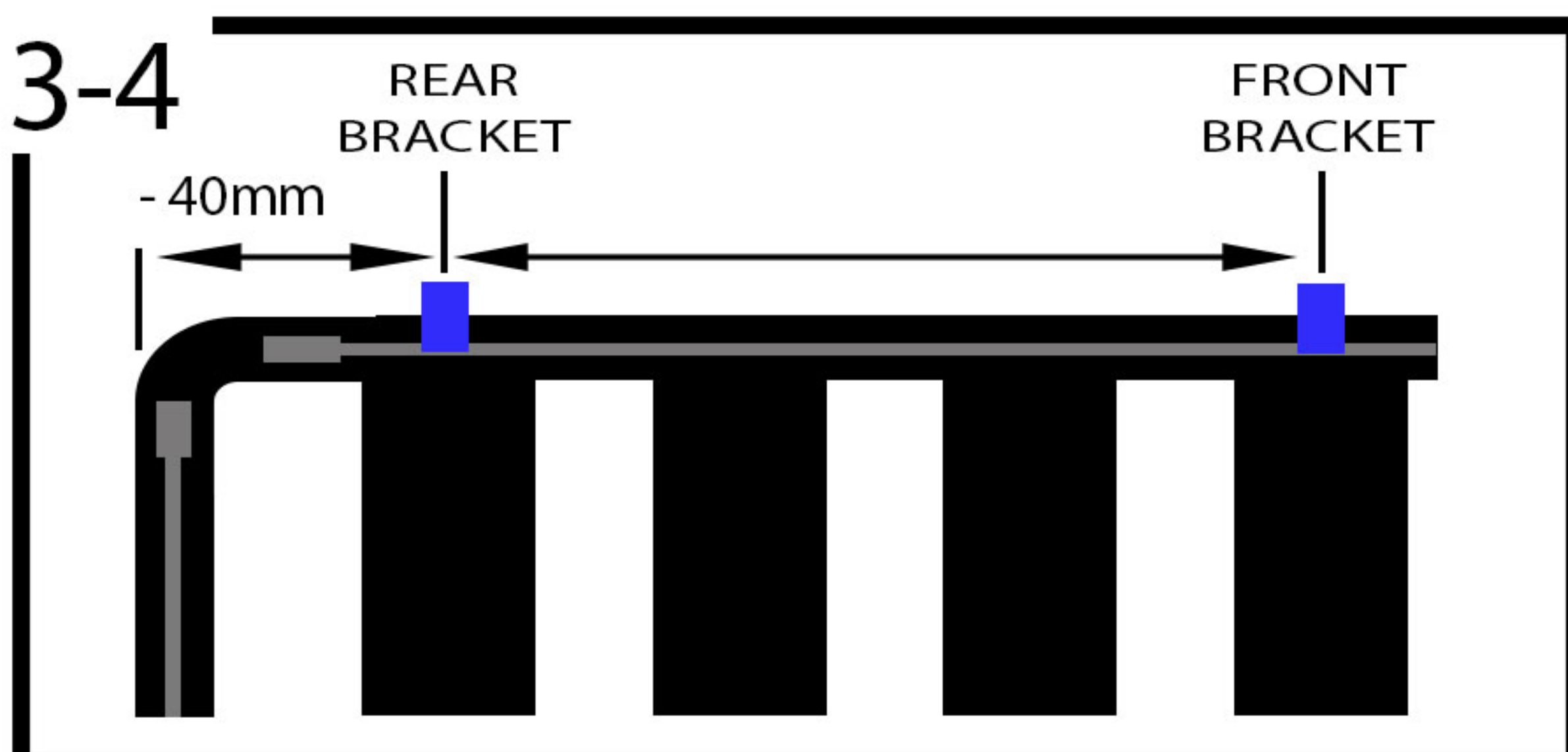
Raised brackets - suits Frontrunner



Universal flat brackets

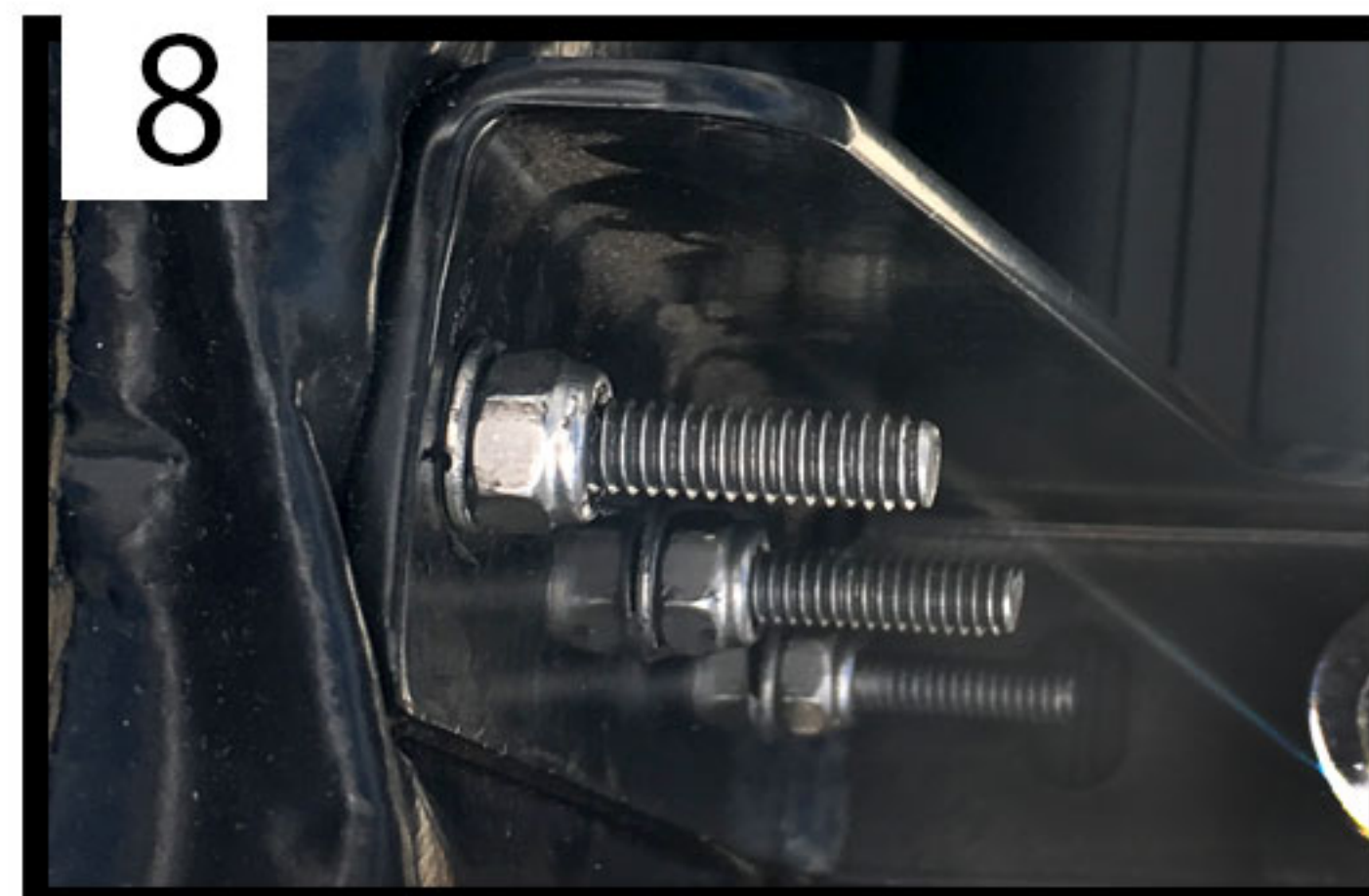
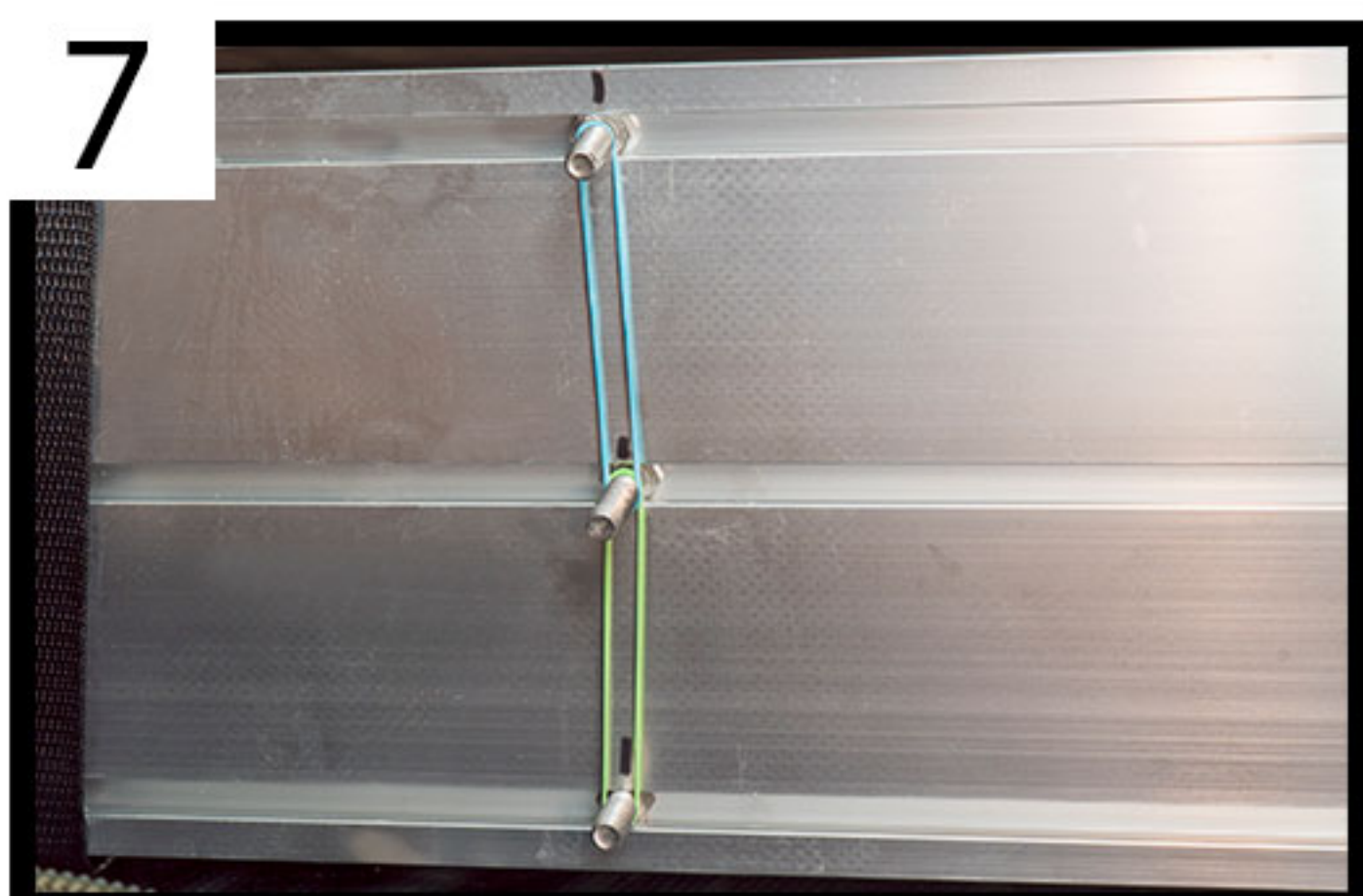


- 1 Inspect box for any damage from transit. Carefully open box.
- 2 Lay awning on a stable, flat surface and zip open cover.
- 3 Fit the selected mounting brackets to the LEFT HAND SIDE of the vehicle. Either drilled through rack or slotted in. Fit rear bracket as close to the rear of the rack as possible. This will help support the hinge.



- 4 Starting at the rear of the vehicle, measure from the center of the rear bracket to the rear edge of the rack. Minus 40mm from this measurement to allow for the hinge to open and close gap at rear of vehicle.
- 5 On the rear of the awning extrusion measure from the hinge side and mark off the rear bracket mounting point.
- 6 Then measure the center of the front bracket to the center of the rear bracket and mark this off on rear of extrusion.
- 7 There are three channels on the rear of the awning to accommodate for your required clearance. Slide the mounting bolts into the channels on the rear of the awning and align them with the markings.

TIP: use small elastics to hold the bolts in place.



- 8 Fit the Awning to the brackets using the bolts and secure with a washer and nut.
- 9 Open awning to confirm the mounting position.

TIP: When mounting against a flat surface, the bolts on hinge can be removed and longer ones used to allow for mounting through the surface.

